



## AlfaPure Z7 – a sample of clear thinking

For cleaning water-based liquids, e.g. coolants and wash liquids



Using high-speed centrifugal separation it is possible to greatly extend the life of your service liquids. Alfa Laval's disc-stack centrifuges provide fast, efficient, simultaneous three-phase separation of, for instance, water, oil and sludge.

AlfaPure Z7 removes contaminating oil, grease and solid particles from water-based liquids, e.g. coolants and wash liquids. The result is lower costs due to reduced fluid consumption, lower disposal costs and improvements in both product quality and working environment which also means increased productivity.

AlfaPure Z7 is a complete system, including separator, feed pump, sludge pump and control system. The touch screen based control system makes it extremely easy to operate. The AlfaPure Z7 has a high capacity-to-size ratio. The module requires less than 2.6 m<sup>2</sup> of floor space and can handle tanks with volumes of up to 250 m<sup>3</sup>. In most cases, AlfaPure Z7 is installed in a bypass system and operates continuously.

### User-friendly operation

Operator convenience was a key parameter in the design of the AlfaPure Z7. The PLC-based control system is operated

by means of a touch screen. All symbols and messages are easily understandable, simplifying the interaction between operator and machine. The control system handles all settings of valves and pumps automatically. The separator is accessible from the front and the openable cabinet gives easy access to process components. Quick couplings ensure that all components can be serviced quickly and simply.

The system is compact. A stainless steel cabinet is mounted on a 1270 x 2030 mm stainless steel frame. The connection interface makes installation simple.

### Modularized system

The modular design of the AlfaPure Z7 makes it easy to adapt the system to the specific needs of the user. Several options and optional equipment are available:

- Siemens or Allen-Bradley PLC control system,
- Surface suction device,
- Crossflow filter for heavily contaminated coolants,
- One or two dosing pumps for addition of chemicals,
- Stainless steel design of all components that come into contact with the fluid.

**Technical Data**

**Capacity**

Coolants & wash liquids	
AlfaPure Z7-5	3000–5000 l/h (13–22 gpm)
AlfaPure Z7-7	5000–7000 l/h (22–31 gpm)

**Operating requirements**

Separation temperature	15–100°C (60–210°F)
pH	6–14
Operating water pressure	200–600 kPa (30–85 psi)
Instrument air pressure	500–1000 kPa (73–145 psi)
Installed power	max 10 kW
Ambient temperature	5–55°C (40–130°F)

**Dimensions**

Length x width x height	2030 x 1270 x 1540 mm (6.7 x 4.2 x 5.1 ft)
Weight	1270 kg (2800 lbs)

**Electrical system**

(Three options)	210–250 V, 380–480 V, 560–690 V
Frequency	50/60 Hz

**Connections**

Process liquid inlet	ISO-Rp 2"
Heavy liquid outlet	ISO-Rp 1 1/4"
Light liquid outlet	ISO-Rp 3/4"
Sludge outlet	ISO-Rp 1/2"
Operating water quick-coupling	Hose 1/2"
Instrument air quick-coupling	Hose 5/16"

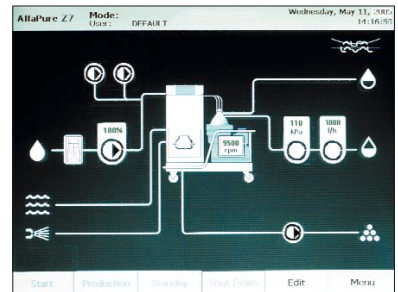
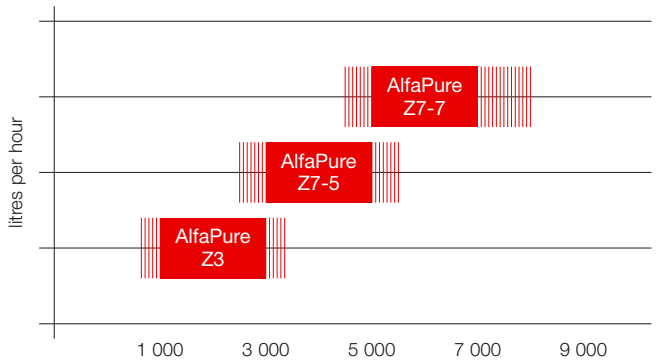
**Shipping data**

System incl. centrifuge, bowl and motor	1270 kg (2800 lbs)
Bowl weight	136 kg (300 lbs)
Gross weight	1450 kg (3200 lbs)
Volume	6.57 m <sup>3</sup> (232 ft <sup>3</sup> )

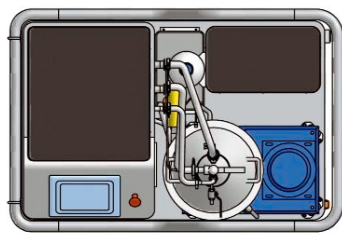
**Meeting your needs**

To meet all your needs, Alfa Laval offers a wide range of stationary or mobile separator systems for all types of fluids. Our offering ranges from systems with capacities suitable for smaller workshops, to larger systems designed to clean complex and heavily contaminated fluids.

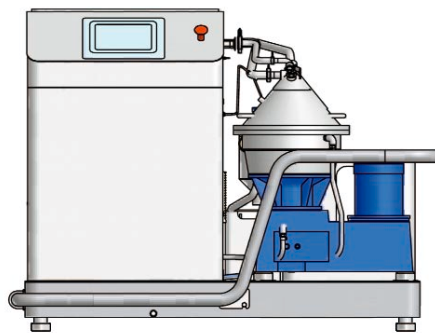
Our global organization guarantees easy start-up and, if you need a helping hand, an Alfa Laval service engineer is always close by. To support your operations further, Alfa Laval has a network of distributors and service partners who are always available to assist you. We call this Nonstop Performance.



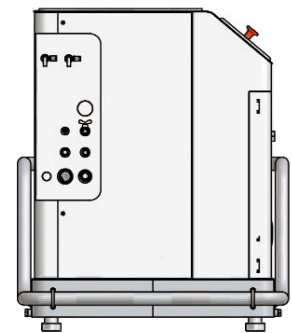
The AlfaPure Z7 user-friendly touch control screen.



Separator from above.



Front view.



Side view, connections.

EFU00027EN 0508

Alfa Laval reserves the right to change specifications without prior notification.

**How to contact Alfa Laval**

Up-to-date Alfa Laval contact details for all countries are always available on our website at [www.alfalaval.com](http://www.alfalaval.com)